

IDEC SmartRelay USB PC-cable driver installation guide

The IDEC SmartRelay USB PC-cable can run under the following operating systems:

- Windows XP/2000/Vista

This guide will tell you how to install this driver software for:

- Windows XP/2000/Vista

Installing the driver on Windows

This guide is based on Windows XP but applicable for other Windows versions also. To successfully install the driver on your computer, follow these steps:

Step 1: Run “CP210x_VCP_Win2K_XP_S2K3_Vista.exe” file and then click on the **Next** button.

Step 2: Select “**I accept the terms of the license agreement**”, and click **Next**.

Step 3: Select **Browse** to relocate the driver installation file or click **Next** to continue.

Step 4: Click **Install**.

Step 5: Check “Launch the CP210x VCP Driver Installer”, and click **Finish** to exit the wizard.

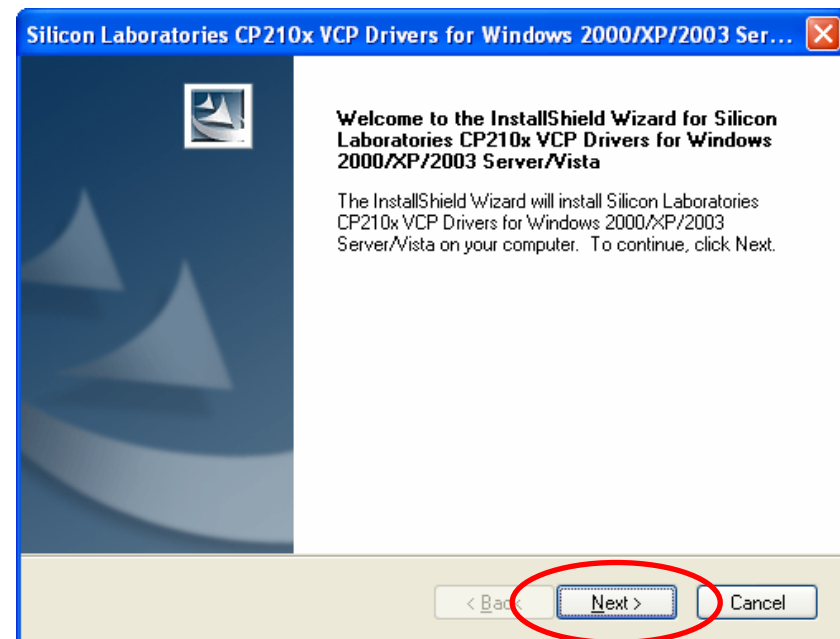
Step 6: Click **Install**.

Step 7: Click **OK**. Maybe you need to reboot your computer to finish the installation.

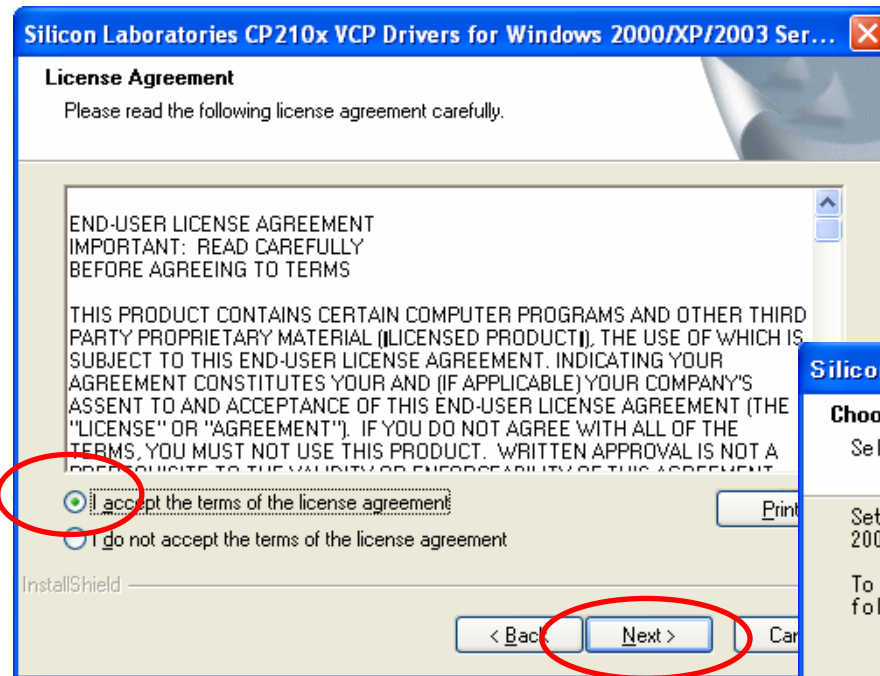
Note: Your PC requires administrator rights to install the driver.

Installing the driver on Windows

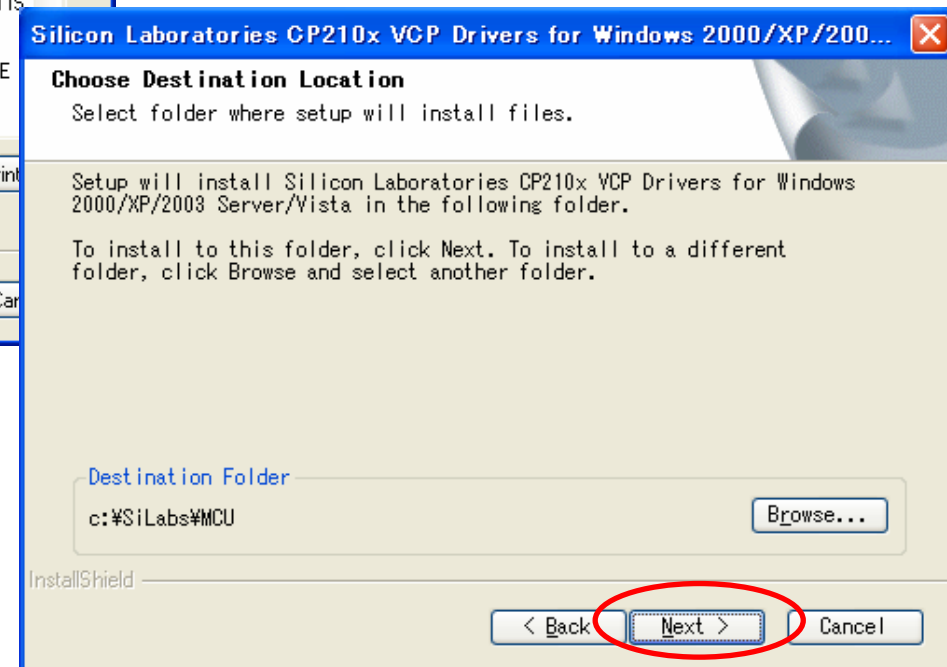
(1)



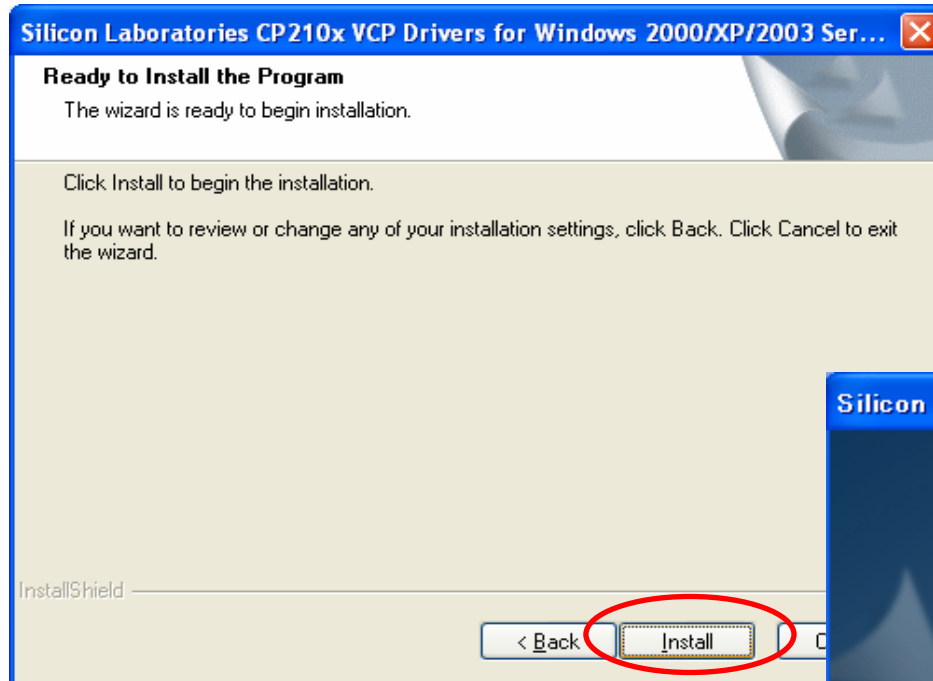
(2)



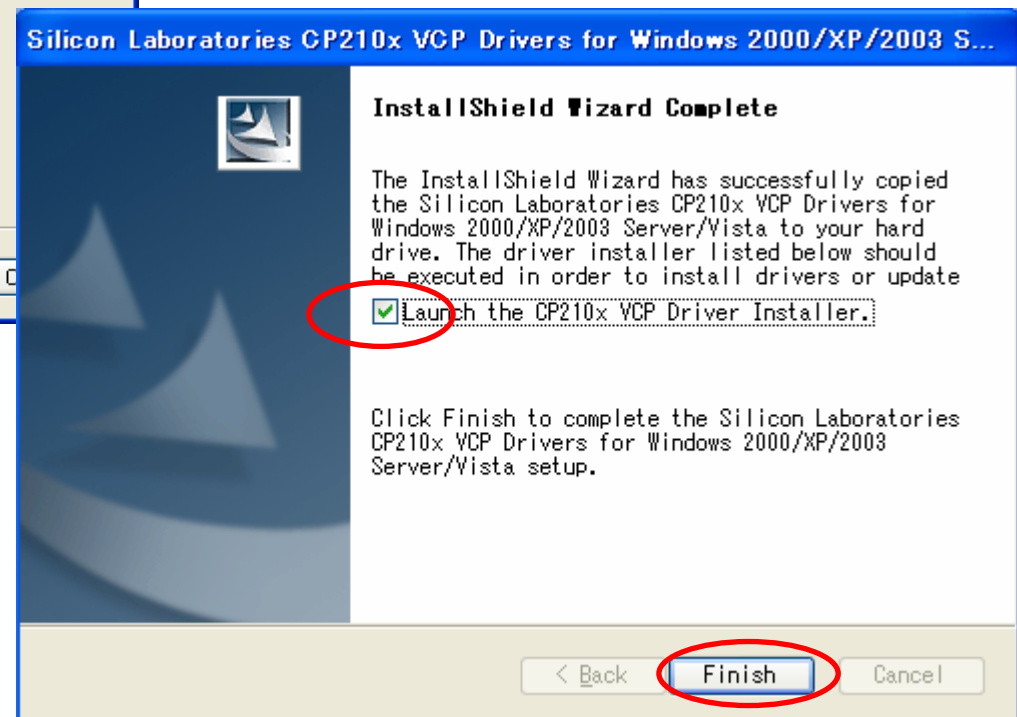
(3)



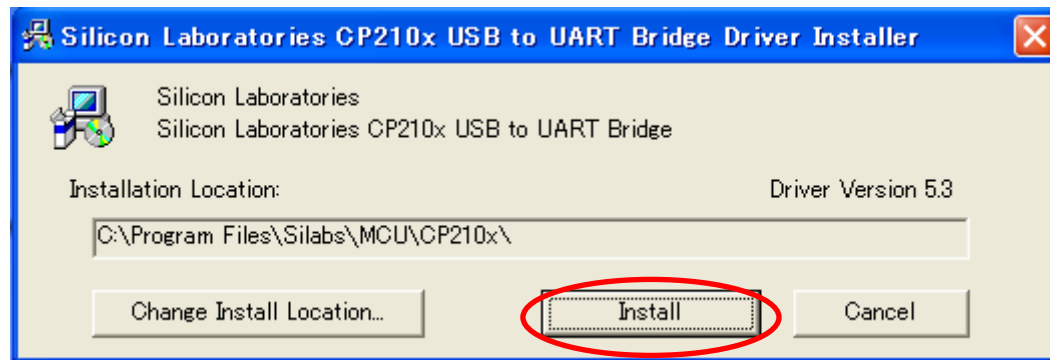
(4)



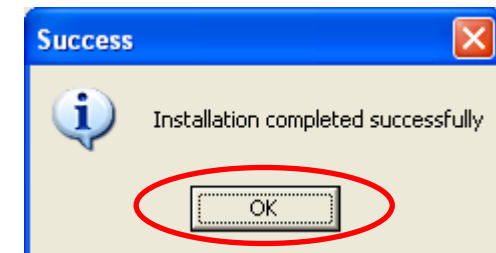
(5)



(6)

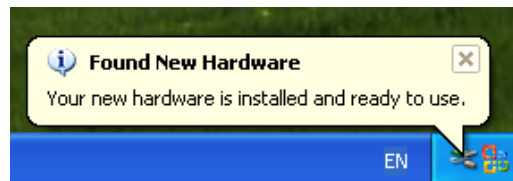
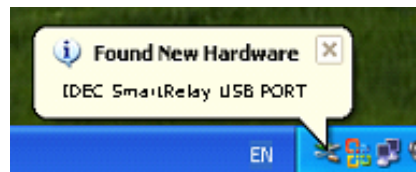


(7)



Initiation of the IDEC SmartRelay USB PC-cable

Plug the IDEC SmartRelay USB PC-cable into a USB port on your computer, three small windows will appear on the lower right area of the screen in succession (only for first plugging).



Initiation of the IDEC SmartRelay USB PC-cable

Note:

➤ DO NOT unplug the IDEC SmartRelay USB PC-cable out when it is transferring data.

➤ To view the **Device Manager**:

Go to **Control Panel**, then open the **System Properties** window. Click on **Device Manager**. Expand the **Ports (COM & LPT)** tree by clicking on the “+” icon beside the title and find the entry “**CP210x USB to UART Bridge Controller**”, which will tell you what COM port has been assigned.

